

Всасывающие и сетчатые фильтры

Технические характеристики

По вопросам продаж и поддержки обращайтесь:

Алматы (727)345-47-04
Ангарск (3955)60-70-56
Архангельск (8182)63-90-72
Астрахань (8512)99-46-04
Барнаул (3852)73-04-60
Белгород (4722)40-23-64
Благовещенск (4162)22-76-07
Брянск (4832)59-03-52
Владивосток (423)249-28-31
Владикавказ (8672)28-90-48
Владимир (4922)49-43-18
Волгоград (844)278-03-48
Вологда (8172)26-41-59
Воронеж (473)204-51-73
Екатеринбург (343)384-55-89

Иваново (4932)77-34-06
Ижевск (3412)26-03-58
Иркутск (395)279-98-46
Казань (843)206-01-48
Калининград (4012)72-03-81
Калуга (4842)92-23-67
Кемерово (3842)65-04-62
Киров (8332)68-02-04
Коломна (4966)23-41-49
Кострома (4942)77-07-48
Краснодар (861)203-40-90
Красноярск (391)204-63-61
Курск (4712)77-13-04
Курган (3522)50-90-47
Липецк (4742)52-20-81

Магнитогорск (3519)55-03-13
Москва (495)268-04-70
Мурманск (8152)59-64-93
Набережные Челны (8552)20-53-41
Нижний Новгород (831)429-08-12
Новокузнецк (3843)20-46-81
Ноябрьск (3496)41-32-12
Новосибирск (383)227-86-73
Омск (3812)21-46-40
Орел (4862)44-53-42
Оренбург (3532)37-68-04
Пенза (8412)22-31-16
Петрозаводск (8142)55-98-37
Псков (8112)59-10-37
Пермь (342)205-81-47

Ростов-на-Дону (863)308-18-15
Рязань (4912)46-61-64
Самара (846)206-03-16
Санкт-Петербург (812)309-46-40
Саратов (845)249-38-78
Севастополь (8692)22-31-93
Саранск (8342)22-96-24
Симферополь (3652)67-13-56
Смоленск (4812)29-41-54
Сочи (862)225-72-31
Ставрополь (8652)20-65-13
Сургут (3462)77-98-35
Сыктывкар (8212)25-95-17
Тамбов (4752)50-40-97
Тверь (4822)63-31-35

Тольятти (8482)63-91-07
Томск (3822)98-41-53
Тула (4872)33-79-87
Тюмень (3452)66-21-18
Ульяновск (8422)24-23-59
Улан-Удэ (3012)59-97-51
Уфа (347)229-48-12
Хабаровск (4212)92-98-04
Чебоксары (8352)28-53-07
Челябинск (351)202-03-61
Череповец (8202)49-02-64
Чита (3022)38-34-83
Якутск (4112)23-90-97
Ярославль (4852)69-52-93

Россия +7(495)268-04-70

Казахстан +(727)345-47-04

Беларусь +(375)257-127-884

Узбекистан +998(71)205-18-59

Киргизия +996(312)96-26-47

эл.почта: mqt@nt-rt.ru || сайт: <https://mpfiltru.nt-rt.ru/>

STRC & MPAC GENERAL INFORMATION

Description

Technical data

Suction filters

Flow rate up to 1000 l/min

STRC

STRC is a range of suction strainers for protection of the downstream pump against the coarse contamination.

They are placed below the oil level directly connected to the suction line of the pump.

Available features:

- Female threaded connections up to 3", for a maximum flow rate of 1000 l/min
- Bypass valve, to relieve excessive pressure drop across the filter media

Common application:

- Mobile machines (Construction and Agriculture machines)
- Industrial equipment

MPAC

MPAC is a range of suction strainers for protection of the downstream pump against the coarse contamination.

They are placed below the minimum oil level, directly connected to the suction line of the pump.

The robust design allows the use of these filters in any heavy duty application.

Available features:

- Female threaded connections up to 3", for a maximum flow rate of 1000 l/min
- Magnetic filter (MPAC), to hold the ferrous particles

Common application:

Industrial equipment

STRC materials

- 1 - Connection: Polyamide, GF reinforced
- 2 - Core tube: Tinned steel
- 3 - Wire mesh
- 4 - End cap: Polyamide, GF reinforced
- 5 - Bypass valve: Polyamide, GF reinforced - Steel

MPAC materials

- 1 - Connection: Aluminium
- 2 - Magnetic filter
- 3 - Tie rod: Galvanized steel
- 4 - End cap: Galvanized steel
- 5 - Core tube: Galvanized steel
- 6 - Filter media: Wire mesh
- 7 - Bottom: Galvanized steel
- 8 - Washer: Galvanized steel
- 9 - Self-locking nut: Galvanized steel - Polyamide

Bypass valve

Opening pressure 30 kPa (0.3 bar)

Elements

Fluid flow through the filter element from OUT to IN.

Temperature

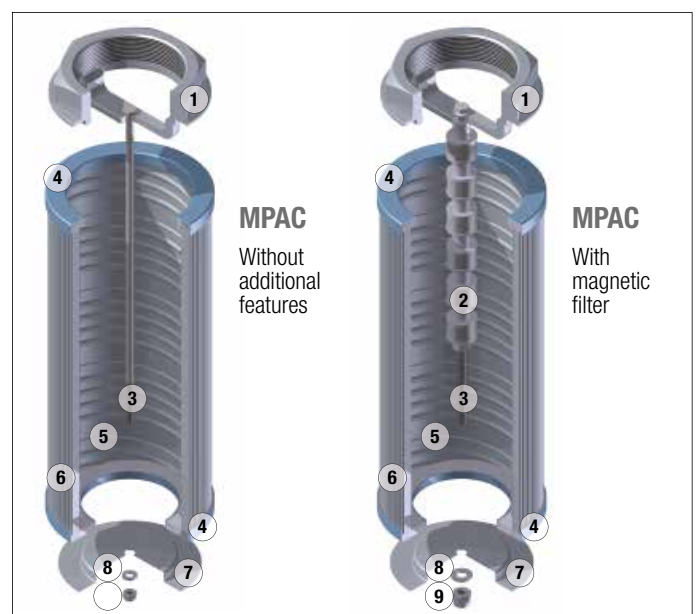
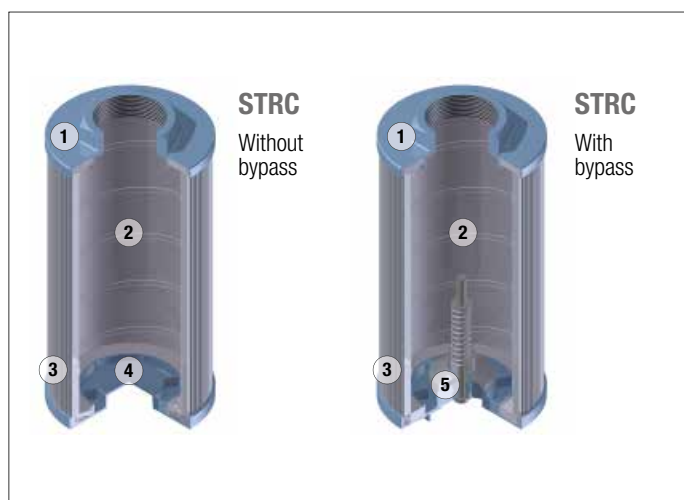
From -25 °C to +110 °C

Quantity

Series and size	pcs/pack
STRC 045 - 050	12
STRC 065 - 070 - 086 - 100	6
STRC 140 - 150	1
MPAC 050	12
MPAC 070 - 100	6
MPAC 140	1

Weights [kg]

Filter series	
STRC	see page 37
MPAC	see page 39



Flow rates [l/min]

Filter series	Thread	l/min
STRC & MPAC	3/8"	19
	1/2"	28
	3/4"	67
	1"	126
	1 1/4"	167
	1 1/2"	258
	2"	480
	2 1/2"	854
	3"	995

Maximum flow rate for a complete suction filter with a pressure drop $\Delta p = 0.08$ bar.

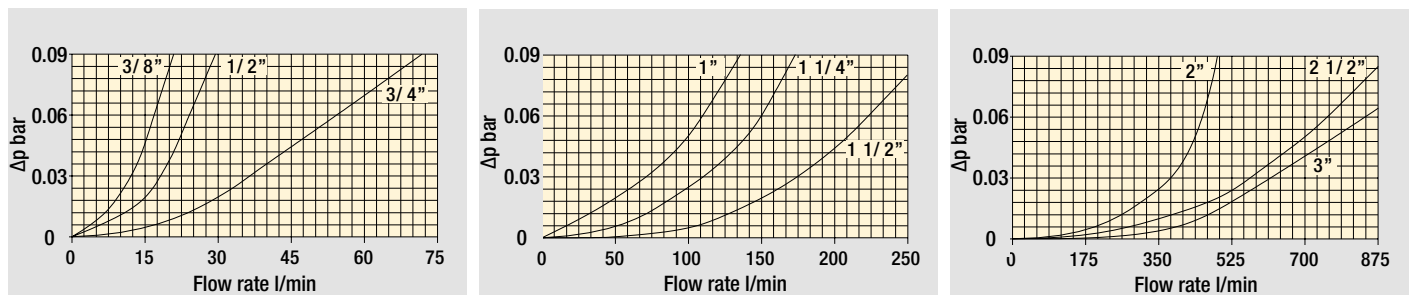
The reference fluid has a kinematic viscosity of 30 mm²/s (cSt) and a density of 0.86 kg/dm³.

Filter series	00 - without bypass	03 - with bypass
STRC	•	•
MPAC	•	-

Hydraulic symbols

Pressure drop

Filters pressure drop Δp in function of connection type



The curves are plotted using mineral oil with density of 0.86 kg/dm³ in compliance with ISO 3968. Δp varies proportionally with density.

Maximum total pressure drop (Δp_{max}) allowed by a new and clean filter

Filter family	Δp_{max}	
Suction	0.08 bar	1.15 psi

COMPLETE FILTER

Series	Example 1:	STRC	045	10	M0060	A	N	03	FG038	0	ON	NN	P01	NN
STRC	Example 2:	STRC	100	20	M0250	A	N	00	FN200	0	ON	NN	P01	NN

Size	
045	086
050	100
065	140
070	150

Length	Size:	045	050	065	070	086	100	140	150
10		•	•	•	•	•	•	•	•
20		-	-	•	•	•	•	•	•
30		-	-	-	-	•	-	•	•
40		-	-	-	-	-	-	•	-

Filtration rating (filter media)	
M0025	Wire mesh 25 µm
M0060	Wire mesh 60 µm
M0090	Wire mesh 90 µm
M0250	Wire mesh 250 µm

Element Δp	
A	1 bar

Seals and treatments	
N	Without seals

Bypass	
00	Without bypass
03	With bypass 30 kPa (0.3 bar)

Connection type	
FG	Thread ISO 1179-2 (GAS)
FN	Thread ANSI/ASME B 1.20.1 (NPT)

Nominal thread		Size:	045	050	065	070	086	100	140	150				
	Length	10	10	10	20	10	20	10	20	30	40	10	20	30
038	3/8"	•	•	-	-	-	-	-	-	-	-	-	-	-
012	1/2"	•	•	•	•	•	-	-	-	-	-	-	-	-
034	3/4"	-	-	•	•	•	-	-	-	-	-	-	-	-
100	1"	-	-	-	•	•	-	-	-	-	-	-	-	-
114	1 1/4"	-	-	-	-	-	-	•	•	-	-	-	-	-
112	1 1/2"	-	-	-	-	-	•	•	•	•	-	-	-	-
200	2"	-	-	-	-	-	•	•	•	•	•	-	-	•
212	2 1/2"	-	-	-	-	-	-	-	-	-	-	•	-	•
300	3"	-	-	-	-	-	-	-	-	-	-	•	•	•

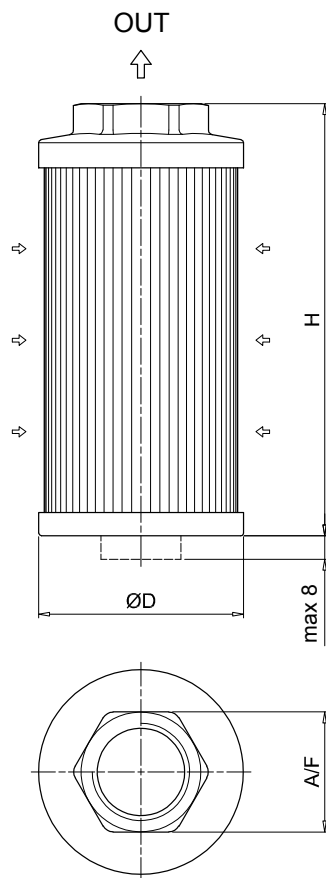
Additional connections	
0	Without additional connections

Connections for clogging indicators	
ON	Without connection

Additional features	
NN	Without additional features

Version	
P01	Standard catalogue item

Certificates	
NN	Without certificates



STRC							
Size	ØD [mm]	Length	Nominal thread		H [mm]	A / F [mm]	Weight [kg]
045	46	10	3/8"	1/2"	105	30	0.19
050	52	10	3/8"	1/2"	79		0.11
065	65	10	1/2"	3/4"	110	41	0.22
		20	3/4"	1"	144		0.24
070	70	10	1/2"	3/4"	95		0.18
		20	1/2"	3/4"	1"		141
086	86	10	1 1/2"	2"	143	69	0.33
		20	1 1/2"	2"	201		0.43
		30	1 1/2"	2"	261		0.53
100	99	10	1 1/4"	1 1/2"	137		0.47
		20	1 1/4"	1 1/2"	2"		227
140	130	10	1 1/2"	2"	160		101
		20	2"		262	0.94	
		30	2 1/2"	3"	272	1.10	
		40	3"		330	1.17	
150	150	10	2"		150	70	0.34
		20	2 1/2"		212	90	0.37
		30	3"		272	100	0.40

Designation & Ordering code

COMPLETE FILTER

Series	Example 1:	MPAC	070	10	M0060	A	N	00	FG034	0	ON	NN	P01	NN
MPAC	Example 2:	MPAC	140	30	M0250	A	N	00	FN300	0	ON	MA	P01	NN

Size

050
070
100
140

Length

Size:	050	070	100	140
10	•	•	•	•
20	-	•	•	•
30	-	-	-	•

Filtration rating (filter media)

M0025 Wire mesh 25 µm	M0090 Wire mesh 90 µm
M0060 Wire mesh 60 µm	M0250 Wire mesh 250 µm

Element Δp

A 1 bar

Seals and treatments

N Without seals

Bypass

00 Without bypass

Connection type

FG Thread ISO 1179-2 (GAS)
FN Thread ANSI/ASME B 1.20.1 (NPT)

Nominal thread

Length	Size:	050		070		100		140	
		10	10	20	10	20	10	20	30
038 3/8"		•	-	-	-	-	-	-	-
012 1/2"		•	•	-	-	-	-	-	-
034 3/4"		-	•	•	-	-	-	-	-
100 1"		-	-	•	•	-	-	-	-
114 1 1/4"		-	-	-	•	•	-	-	-
112 1 1/2"		-	-	-	-	•	•	-	-
200 2"		-	-	-	-	-	•	•	•
212 2 1/2"		-	-	-	-	-	-	•	-
300 3"		-	-	-	-	-	-	-	•

Additional connections

0 Without additional connections

Connections for clogging indicators

ON Without connection

Additional features

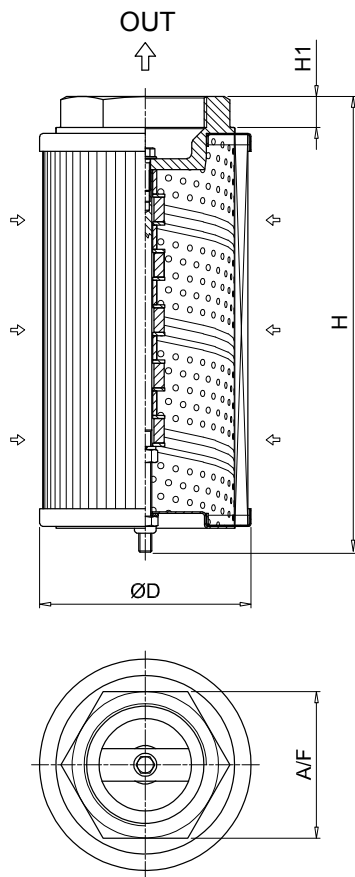
NN Without additional features
MA With magnetic filter

Version

P01 Standard catalogue item

Certificates

NN Without certificates



MPAC									
Size	ØD [mm]	Length	Nominal thread	H [mm]	H1 [mm]	A/F [mm]	Weight [kg]		
050	50	10	3/8"	98	16	28	0.17		
			1/2"	113			0.27		
070	70	10	3/4"	115	18	42	0.36		
		20	160	0.39					
		30	174	0.54					
100	99	10	1"	148	20	60	0.63		
		20	1 1/4"	239			0.95		
		30	1 1/2"	272			0.91		
140	136	10	2"	162	13	80	1.00		
		20	2 1/2"	281			1.60		
		30	2"	322			13	80	1.60
			3"	335			22	106	1.93



THE X CONCEPT FOR OUR FILTERS

Protect the performance of your system with MYclean.
Quality and efficiency are fundamental for MP Filtri:
this exclusive new filter element possesses polygon shape geometry and specific seal
that ensures only original spare parts can be used - ensuring correct operation and
higher system reliability.

SFEX series

with MY CLEAN FEX Filter Element



- **Protects the machine from improper use of non-original products.**
- **Safety of constant quality protection & reliability**

With exclusive filter element you are sure that only MP Filtri filter elements can be used, ensuring the best cleaning level of the oil due to the use of originals filter elements.



The products identified as SFEX are protected by:

- Italian Patent n° 102014902261205
- Canadian Patent n° 2,937,258
- European Patent n° 3 124 092 B1
- US Patent n° 20170030384 A1

SFEX series

Flow rate up to 100 l/min

ELIXIR®



SFEX GENERAL INFORMATION

Description

Technical data

Suction filters

Flow rate up to 100 l/min

SFEX are range of suction filters for protection of the downstream pump against the coarse contamination.

They are placed below the minimum oil level, directly connected to the suction line of the pump in-line mounted.

Available features:

- Female threaded connections up to 1 1/4" and SAE connections up to 1 5/8", for a maximum flow rate of 100 l/min
- Bypass valve, to relieve excessive pressure drop across the filter media
- Visual, electrical, axial and radial vacuum gauges
- MYclean interface connection for the filter element, to protect the product against non-original spare parts
- External protective wrap, to optimize the flow through the element and to save the element efficiency against non-proper handling

Common application:

- Mobile machines
- Industrial equipment

Filter housing materials

- Head: Aluminium
- Bypass valve: Polyamide - Steel
- Bowl: Polyamide

Bypass valve

Opening pressure 30 kPa (0.3 bar) \pm 10%

Elements

Fluid flow through the filter element from OUT to IN

Seals

Standard NBR series A

Temperature

From -25 °C to +110 °C

Note

SFEX filters are provided for vertical mounting

Weights [kg] and volumes [dm³]

Filter series	Length	Weights [kg]		Length	Volumes [dm ³]	
		1	2		1	2
SFEX 060		1.00	1.15		0.60	0.80
SFEX 110		1.90	2.10		1.60	2.00

Flow rates [l/min]

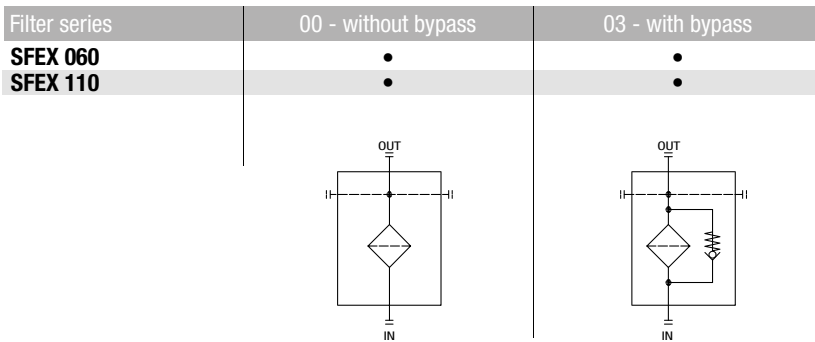
Filter element design - N Series						
Filter series	Length	M0060	M0090	M0250	P0010	P0025
SFEX 060	10	31	33	33	13	20
	20	34	35	35	24	30

Filter element design - N Series						
Filter series	Length	M0060	M0090	M0250	P0010	P0025
SFEX 110	10	93	96	96	48	53
	20	98	99	99	60	65

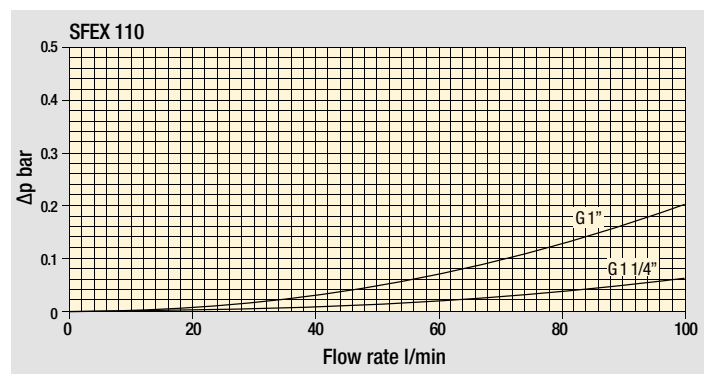
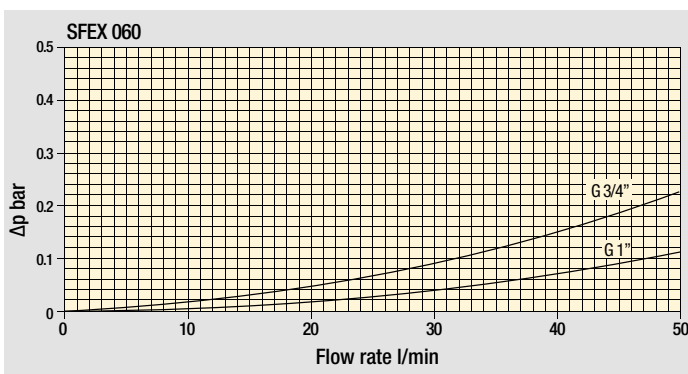
Maximum flow rate for a complete suction filter with a pressure drop $\Delta p = 0.08$ bar.

The reference fluid has a kinematic viscosity of 30 mm²/s (cSt) and a density of 0.86 kg/dm³.

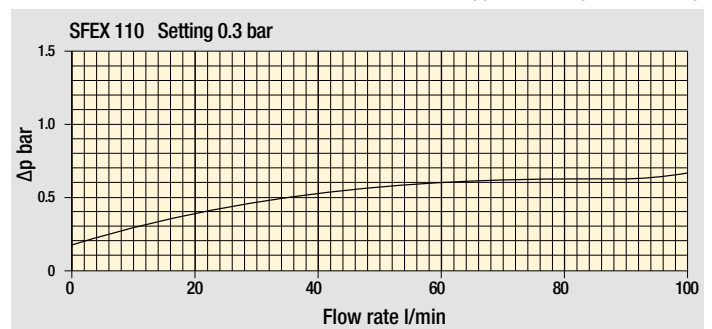
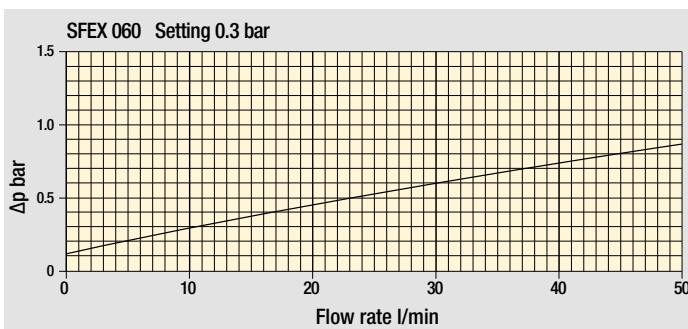
Hydraulic symbols



Pressure drop Filter housings Δp pressure drop



Bypass valve pressure drop



The curves are plotted using mineral oil with density of 0.86 kg/dm³ in compliance with ISO 3968. Δp varies proportionally with density.

Corrective factors "Y" for filter element Δp calculation

Filter element		Nominal filtration Collapse ΔP : A = 1 bar					
Type	Length	P0010	P0025	M0025	M0060	M0090	M0250
FEX 060	10	4.58	3.22	1.02	0.89	0.63	0.63
	20	1.97	1.38	0.62	0.45	0.29	0.29
FEX 110	10	1.33	1.12	0.22	0.18	0.14	0.14
	20	0.90	0.76	0.15	0.10	0.09	0.09

See page 22 for the complete information regarding filter element Δp calculation.


Maximum total pressure drop (Δp max) allowed by a new and clean filter

Filter family	Δp max	
Suction	0.08 bar	1.15 psi

SFEX SFEX060 - SFEX110

Designation & Ordering code

COMPLETE FILTER

Series	Example 1:	SFEX	060	10	M0060	C	A	03	FG034	0	6T	NN	P01	NN	
SFEX	Filter featuring 	Example 2:	SFEX	110	20	M0060	C	A	00	FS016	0	6T	NN	P01	NN
Size															
060															
110															
Length															
10															
20															
Filtration rating (filter media)															
M0025 Wire mesh 25 µm	P0010 Resin-impregnated paper 10 µm														
M0060 Wire mesh 60 µm	P0025 Resin-impregnated paper 25 µm														
M0090 Wire mesh 90 µm															
M0250 Wire mesh 250 µm															
Element Δp															
C 8 bar															
Seals and treatments															
A NBR															
Bypass															
00 Without bypass															
03 With bypass 30 kPa (0.3 bar)															
Connections															
	060	110		060	110		060	110							
FG034 G 3/4"	•	-	FN034 3/4" NPT	•	-	FS012 SAE 12 - 1 1/16" - 12 UN	•	-							
FG100 G 1"	•	•	FN100 1" NPT	•	•	FS016 SAE 16 - 1 5/16" - 12 UN	•	•							
FG114 G 1 1/4"	-	•	FN114 1 1/4" NPT	-	•	FS020 SAE 20 - 1 5/8" - 12 UN	-	•							
Additional connections															
0 Without additional connections															
Connections for clogging indicators															
6T With both side indicator connections, with metal plugs															
Additional features															
NN Without additional features															
Version															
P01 Standard catalogue item															
Certificates															
NN None															

CLOGGING INDICATORS

See page 719

VEB Electrical vacuum indicator

VVB Axial pressure gauge

VLB Electrical / visual vacuum indicator

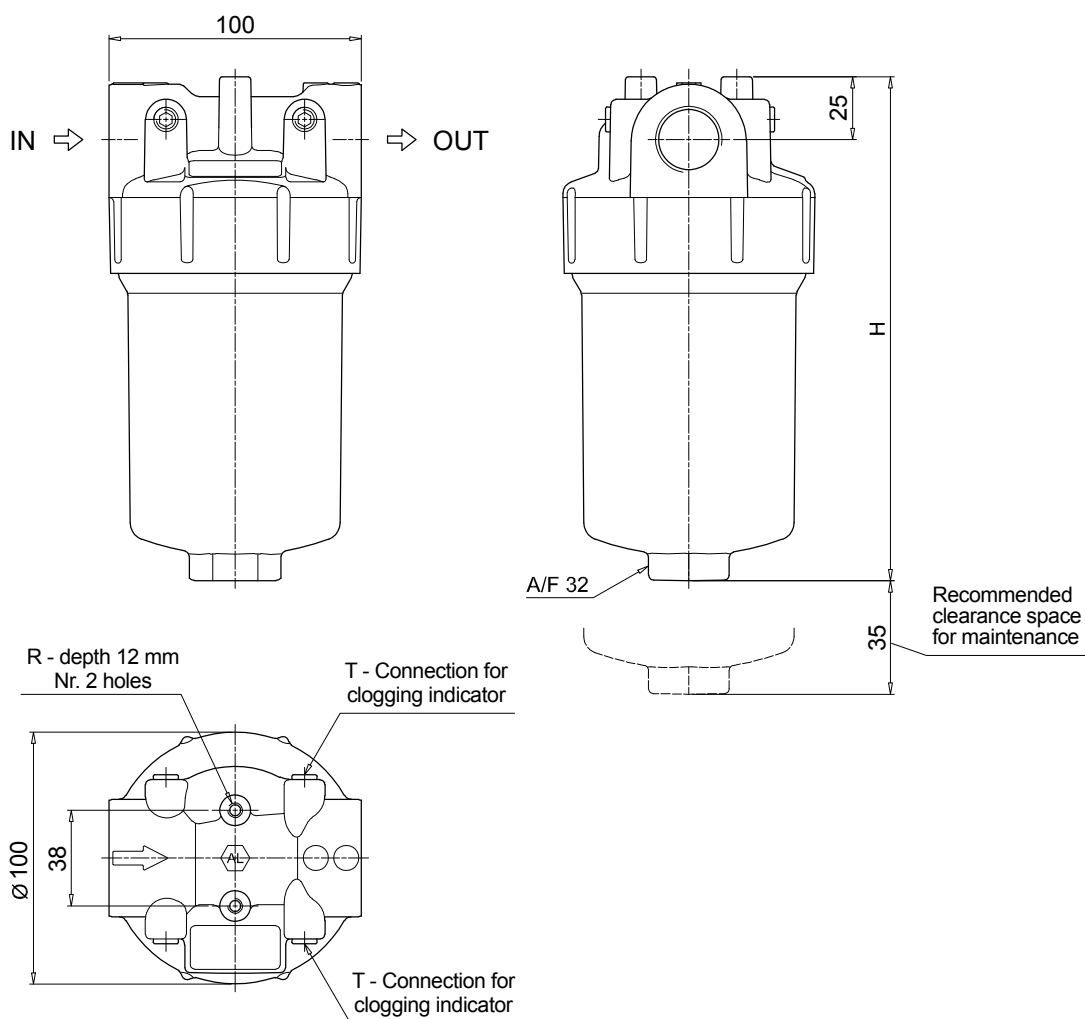
VVS Radial pressure gauge

FILTER ELEMENT										
Series	Example 1: FEX 060 10 M0060 C A 00 NN P01 NN									
FEX Filter element with MYCLEAN feature	Example 2: FEX 110 20 M0060 C A 00 NN P01 NN									
Size										
060										
110										
Length										
10										
20										
Filtration rating (filter media)										
M0025 Wire mesh 25 µm	P0010 Resin-impregnated paper 10 µm									
M0060 Wire mesh 60 µm	P0025 Resin-impregnated paper 25 µm									
M0090 Wire mesh 90 µm										
M0250 Wire mesh 250 µm										
Element Δp										
C 8 bar										
Seals and treatments										
A NBR										
Bypass										
00 Without bypass										
Additional features										
NN Without										
Version										
P01 Standard catalogue item										
Certificates										
NN None										

Dimensions

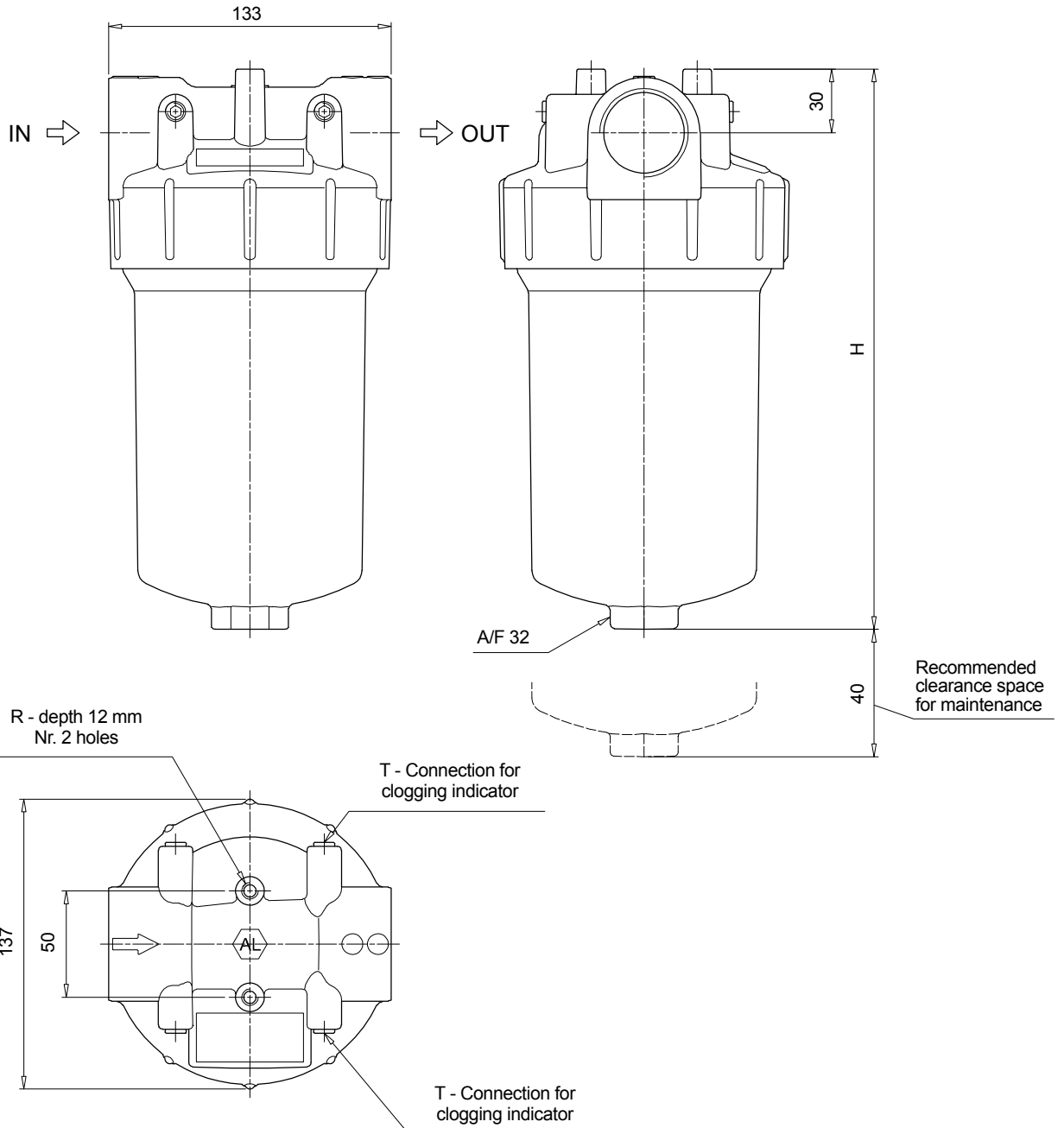
Filter length	H [mm]
10	202
20	265

Connections	T	R
FG034	G 1/8"	M6
FG100	G 1/8"	M6
FN034	1/8" NPT	1/4" UNC
FN100	1/8" NPT	1/4" UNC
FS012	1/8" NPT	1/4" UNC
FS016	1/8" NPT	1/4" UNC



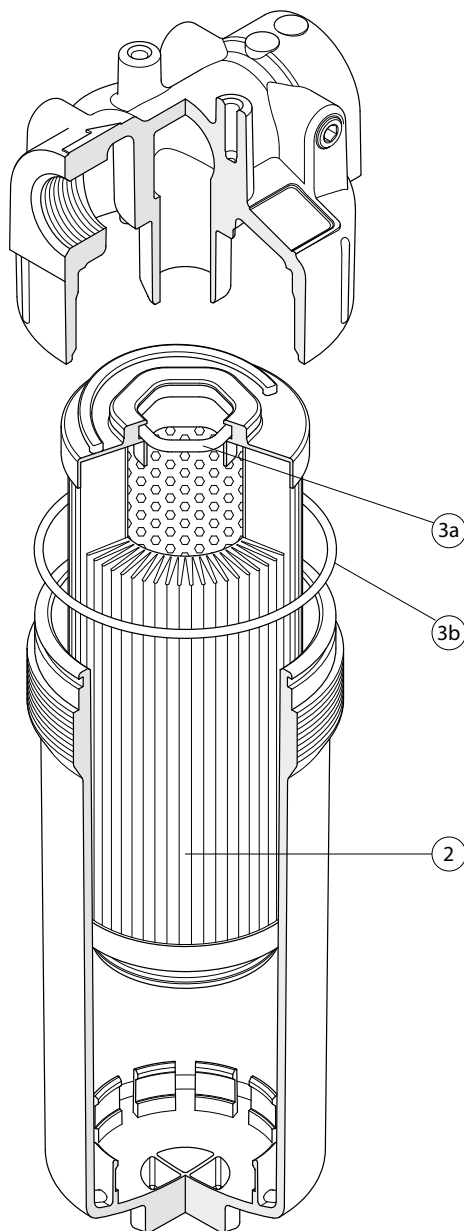
Filter length	H [mm]
10	266
20	315

Connections	T	R
FG100	G 1/8"	M8
FG114	G 1/8"	M8
FN100	1/8" NPT	5/16" UNC
FN114	1/8" NPT	5/16" UNC
FS016	1/8" NPT	5/16" UNC
FS020	1/8" NPT	5/16" UNC



SFEX SPARE PARTS

Order number for spare parts



Item:	Q.ty: 1 pc.	Q.ty: 1 pc.
	2	3 (3a ÷ 3b)
Filter series	Filter element	Seal Kit code number NBR
SFEX 060	See order table	02050771
SFEX 110		02050772

Designation & Ordering code

VACUUM INDICATORS

Series	Configuration example 1:	VE	A	21	V	A	50	P01	EX
VE Electrical vacuum indicator	Configuration example 2:	VL	B	21	A	A	71	P01	
VL Electrical/Visual vacuum indicator	Configuration example 3:	VV	R	20				P01	
VV Vacuum gauge									

Type VE - VL	Type VV	SFxC	SFEX
A Connection EN 10226 - R1/4"	A Axial connection EN 10226 - R1/4"	•	-
B Connection EN 10226 - R1/8"	B Axial connection EN 10226 - R1/8"	-	•
	R Radial connection EN 10226 - R1/4"	•	-
	S Radial connection EN 10226 - R1/8"	-	•

Vacuum setting	VE	VL	VV
20 -0.16 bar	-	-	•
21 -0.21 bar	•	•	-

Seals	VEA - VLA	VEB - VLB
A NBR	•	•
V FPM	•	-

Thermostat	VE	VL
A Without	•	•

Electrical connections	VE	VL
50 Connection EN 175301-803	•	-
51 Connection EN 175301-803, transparent base with lamps 24 Vdc	-	•
52 Connection EN 175301-803, transparent base with lamps 110 Vdc	-	•
53 Connection EN 175301-803, transparent base with lamps 230 Vac	-	•
71 Connection IEC 61076-2-101 D (M12), black base with lamps 24 Vdc	-	•

Option	P01	Pxx
P01 MP Filtri standard		
Pxx Customized		

Certifications	VEA21A	VEA21V	VEB	VL	VV
Without	•	•	•	•	•
EX ATEX certification	•	•	•	-	-
UL UL certification	•	-	-	-	-

SFMC 250 series

Flow rate up to 160 l/min



SFMC 250 GENERAL INFORMATION

Description

Technical data

Suction filters

Flow rate up to 160 l/min

SFMC 250 is a range of suction filters with integrated shut-off valve for protection of the downstream pump against the coarse contamination.

They are placed below the minimum oil level, directly connected to the suction line of the pump.

They can be fitted on the side or below the tank, allowing a more flexible design of the tank.

The shut-off valve closes automatically when the cover is removed, allowing the filter element replacement without the fluid drop.

Available features:

- Female threaded connections up to 1" and flanged connections up to 1 1/2", for a maximum flow rate of 160 l/min
- Multiple connections, to connect several suction lines
- Bypass valve, to relieve excessive pressure drop across the filter media
- Magnetic filter, to hold the ferrous particles
- Visual, electrical and electronic clogging indicators

Common application:

- Mobile machines
- Industrial equipment

Filter housing materials

- Filter body: Aluminium
- Cover: Polyamide, GF reinforced
- Valve: Polyamide, GF reinforced - Steel
- Anti-Emptying valve: Steel

Bypass valve

Opening pressure 30 kPa (0.3 bar) $\pm 10\%$

Elements

Fluid flow through the filter element from IN to OUT

Seals

- Standard NBR series A or W
- Optional FPM series V or Z

Temperature

From -25 °C to +110 °C

Note

SFMC 250 filters mounting, see the drawings on page 54 and following.

Weights [kg] and volumes [dm³]

Filter series	Weights [kg]	Volumes [dm ³]
SFMC 250	2.8	2.3
SFMC 250	2.8	2.4

GENERAL INFORMATION SFMC 250

Flow rates [l/min]

Filter series	Filter element design - N Series					
	M0025	M0060	M0090	M0250	P0010	P0025
SFMC 250	147	151	155	160	85	132

Maximum flow rate for a complete suction filter with a pressure drop $\Delta p = 0.08$ bar.

The reference fluid has a kinematic viscosity of 30 mm²/s (cSt) and a density of 0.86 kg/dm³.

Hydraulic symbols

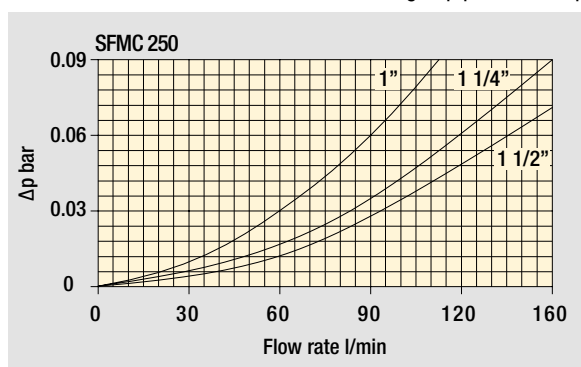
Filter series	0 - without additional connections	1 - with smaller additional connections	0 - without additional connections	1 - with smaller additional connections
	SFMC 250 without bypass	•	•	-
SFMC 250 with bypass	-	-	•	•

Diagram showing a diamond-shaped filter element with 'IN' at the bottom and 'OUT' at the top.

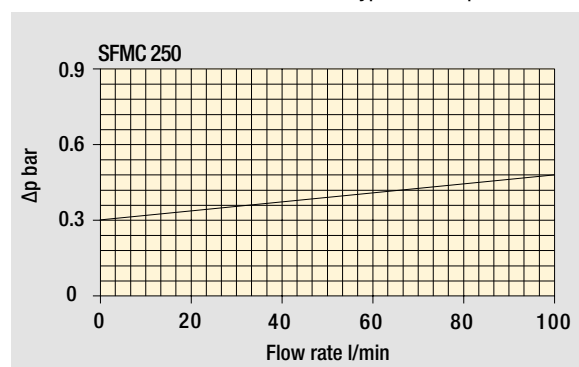
Diagram showing a diamond-shaped filter element with 'IN' at the bottom, 'OUT' at the top, and two 'Aux OUT' ports on the right side.

Pressure drop

Filter housings Δp pressure drop



Bypass valve pressure drop



The curves are plotted using mineral oil with density of 0.86 kg/dm³ in compliance with ISO 3968. Δp varies proportionally with density.

Corrective factors "Y" for filter element Δp calculation

Filter element		Nominal filtration Collapse ΔP : A = 1 bar					
Type	Length	P0010	P0025	M0025	M0060	M0090	M0250
SMC 250	10	0.65	0.20	0.10	0.08	0.05	0.03

See page 22 for the complete information regarding filter element Δp calculation.

Maximum total pressure drop (Δp max) allowed by a new and clean filter

Filter family	Δp max	
Suction	0.08 bar	1.15 psi

SFMC 250

Designation & Ordering code

COMPLETE FILTER

Series	Example 1:	SFMC	250	10	M0025	A	A	00	FF112	0	5T	MA	P01	NN
SFMC	Example 2:	SFMC	250	10	P0010	A	V	00	FG112	0	5T	NN	P01	NN

Size
250

Length
10

Filtration rating (filter media)	
M0025 Wire mesh 25 µm	P0010 Resin-impregnated paper 10 µm
M0060 Wire mesh 60 µm	P0025 Resin-impregnated paper 25 µm
M0090 Wire mesh 90 µm	
M0250 Wire mesh 250 µm	

Element Δp
A 1 bar

Seals and treatments	M0xxx	P0xxx
A NBR	•	•
V FPM	•	•
W NBR with filter housing and components surface treatment	•	-
Z FPM with filter housing and components surface treatment	•	-

Bypass
00 Without bypass
03 With bypass 30 kPa (0.3 bar)

Connections	
FG100 G 1"	FS016 SAE 16 - 1 5/16" - 12 UN
FG114 G 1 1/4"	FS020 SAE 20 - 1 5/8" - 12 UN
FG112 G 1 1/2" G 1"	FS024 SAE 24 - 1 7/8" - 12 UN SAE 16 - 1 5/16" - 12 UN
FN100 1" NPT	FE112 1 1/2" SAE 3000 psi/M
FN114 1 1/4" NPT	FF112 1 1/2" SAE 3000 psi/UNC
FN112 1 1/2" NPT	Available additional connections

Additional connections	FG112	FS024
0 Without additional connections	-	-
1 With smaller additional connections	G1"	SAE 16 - 1 5/16" - 12 UN

Connections for clogging indicators
5T With rear indicator connection, with metal plugs

Additional features
NN Without additional features
MA With magnetic filter

Version
P01 Standard catalogue item

Certificates
NN None

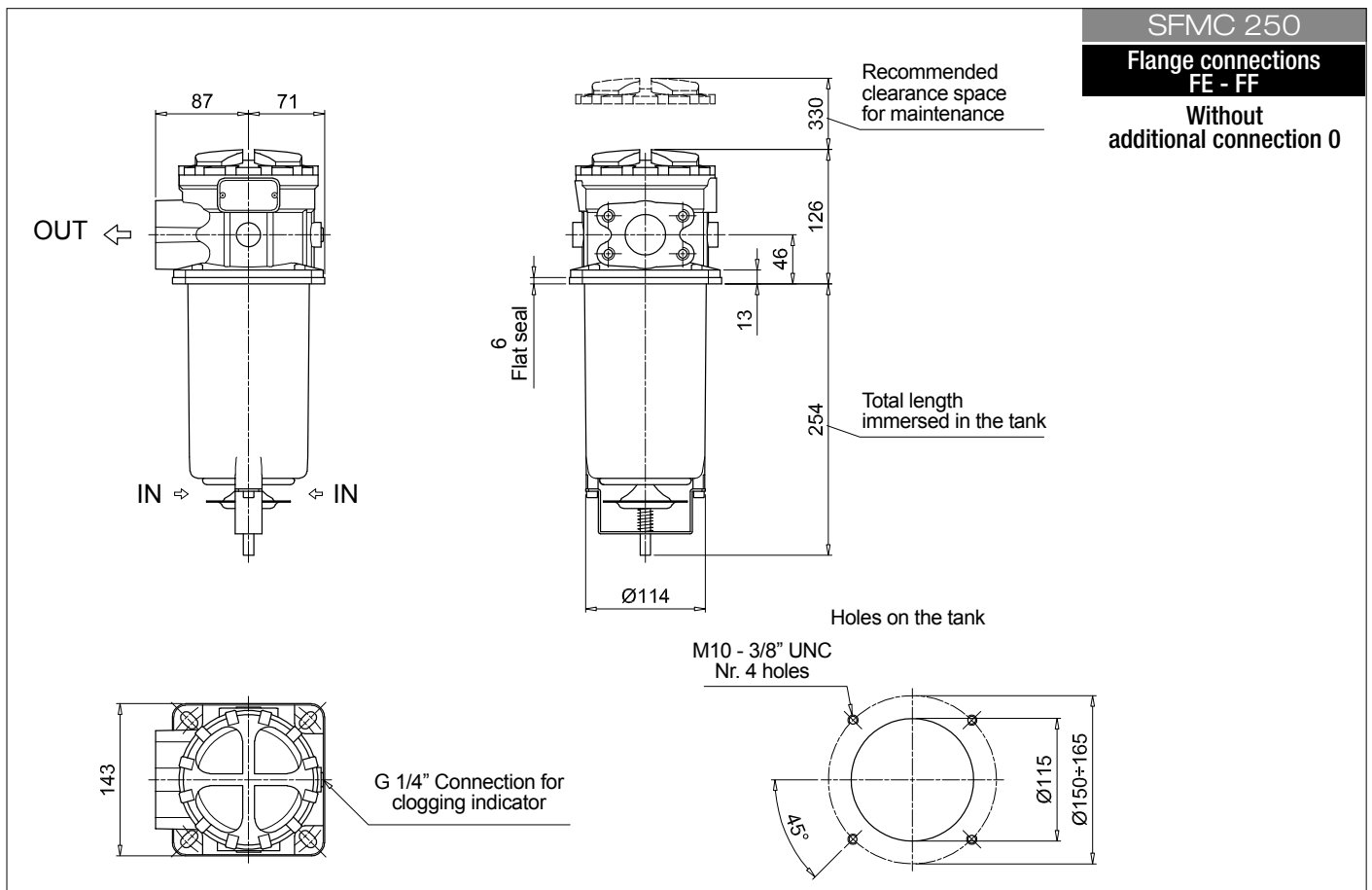
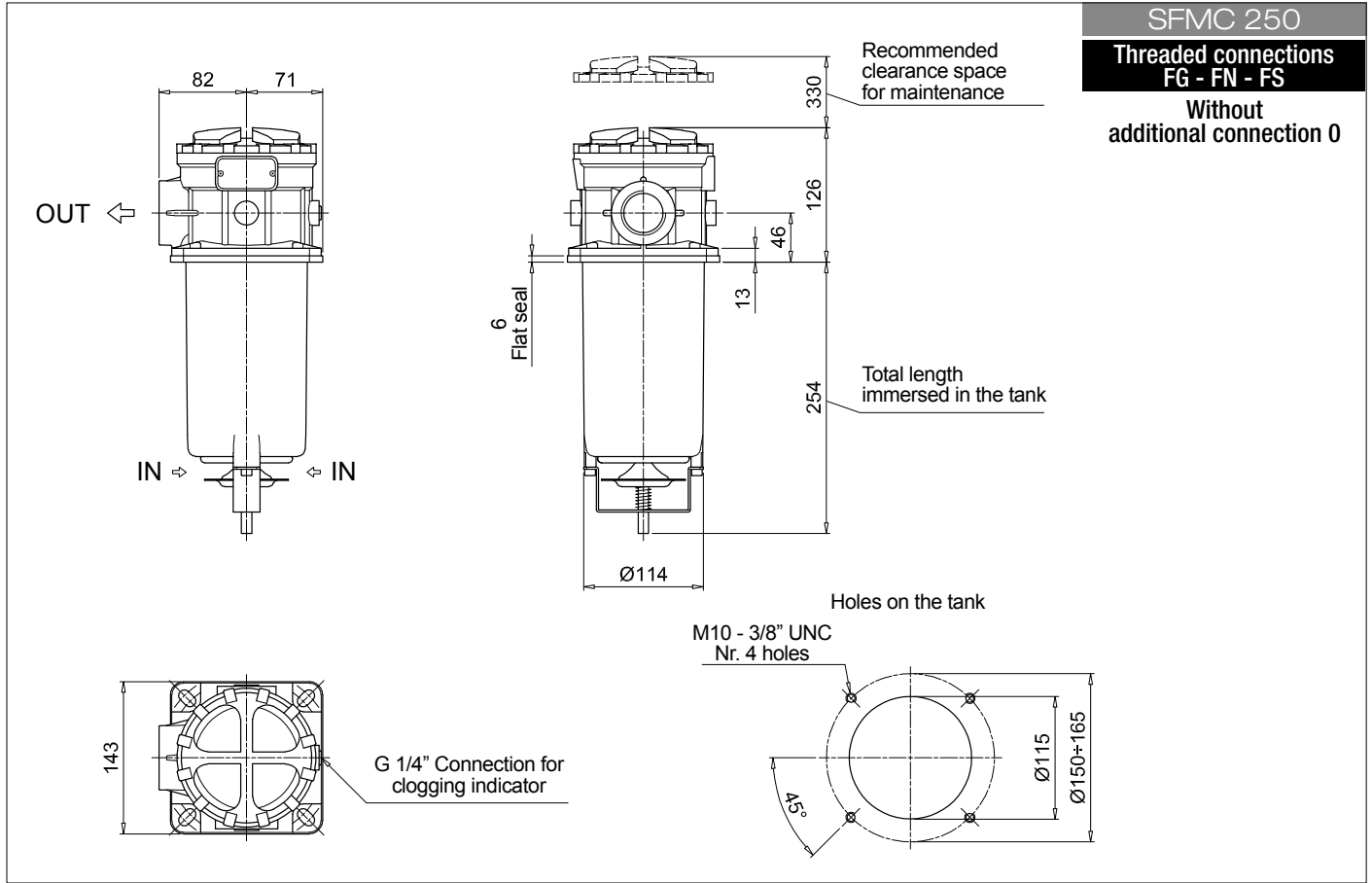
CLOGGING INDICATORS

See page 719

VEA Electrical vacuum indicator	VVA Axial vacuum gauge
VLA Electrical / visual vacuum indicator	VVR Radial vacuum gauge

SFMC 250

Dimensions

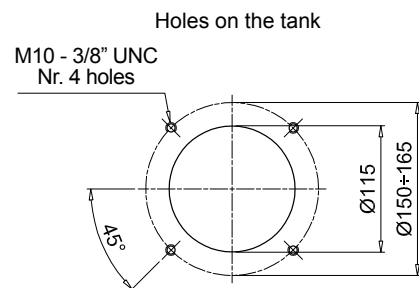
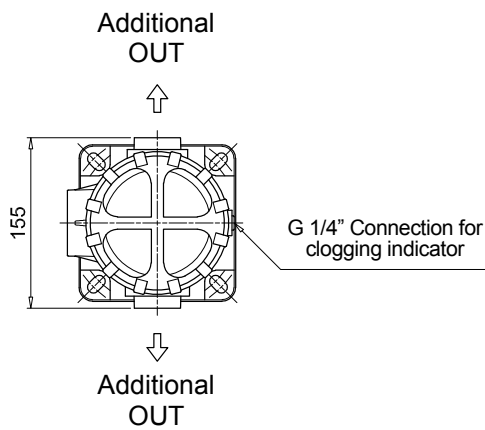
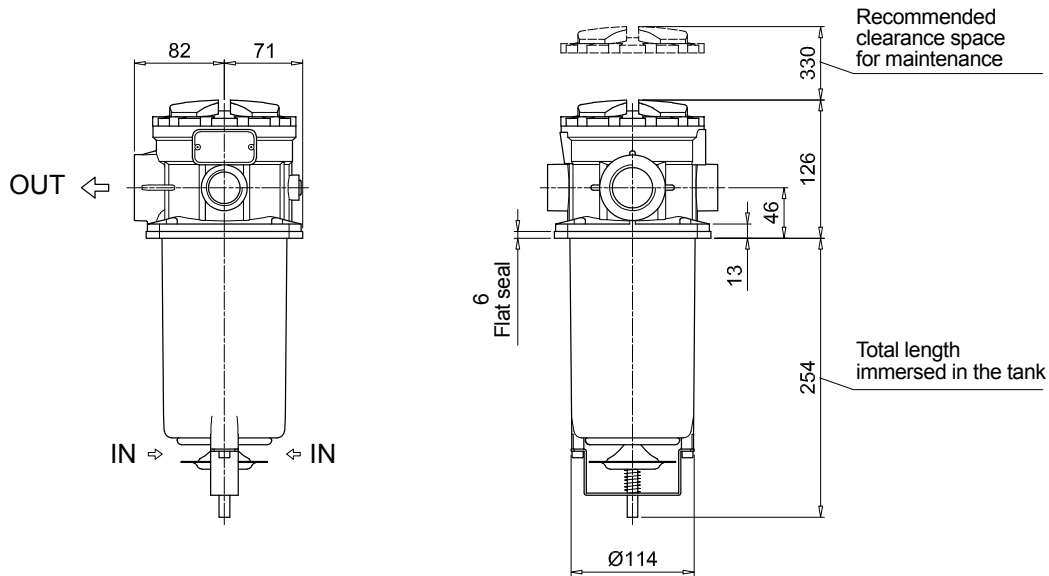


SFMC 250

Dimensions

SFMC 250

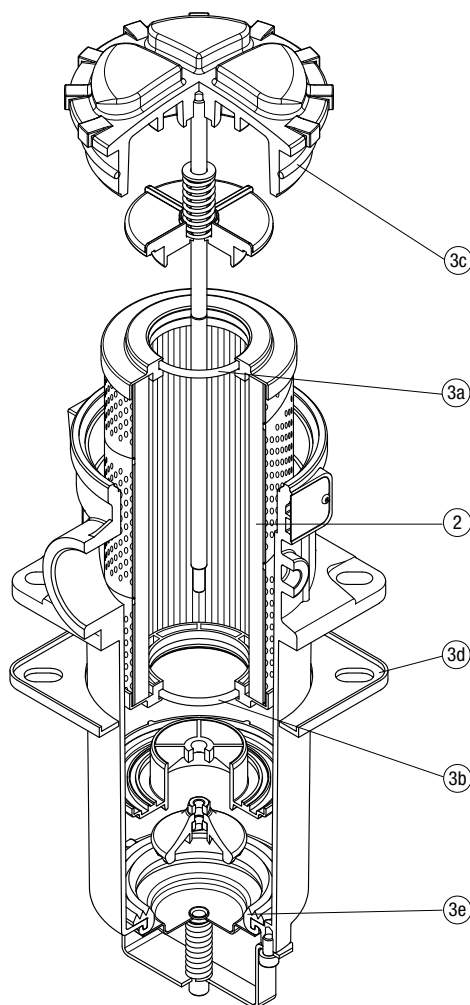
With
smaller additional
connection 1



SFMC 250 SPARE PARTS

Order number for spare parts

SFMC 250



Item:	Q.ty: 1 pc.	Q.ty: 1 pc.	
Filter series	Filter element	Seal Kit code number	
SFMC 250	See order table	NBR	FPM
	2	3	(3a ÷ 3e)
		02050586	02050587

Designation & Ordering code

VACUUM INDICATORS

Series	Configuration example 1:	VE	A	21	V	A	50	P01	EX
VE Electrical vacuum indicator	Configuration example 2:	VL	B	21	A	A	71	P01	
VL Electrical/Visual vacuum indicator	Configuration example 3:	VV	R	20				P01	
VV Vacuum gauge									

Type VE - VL	Type VV	SFxC	SFEX
A Connection EN 10226 - R1/4"	A Axial connection EN 10226 - R1/4"	•	-
B Connection EN 10226 - R1/8"	B Axial connection EN 10226 - R1/8"	-	•
	R Radial connection EN 10226 - R1/4"	•	-
	S Radial connection EN 10226 - R1/8"	-	•

Vacuum setting	VE	VL	VV
20 -0.16 bar	-	-	•
21 -0.21 bar	•	•	-

Seals	VEA - VLA	VEB - VLB
A NBR	•	•
V FPM	•	-

Thermostat	VE	VL
A Without	•	•

Electrical connections	VE	VL
50 Connection EN 175301-803	•	-
51 Connection EN 175301-803, transparent base with lamps 24 Vdc	-	•
52 Connection EN 175301-803, transparent base with lamps 110 Vdc	-	•
53 Connection EN 175301-803, transparent base with lamps 230 Vac	-	•
71 Connection IEC 61076-2-101 D (M12), black base with lamps 24 Vdc	-	•

Option	P01	Pxx
P01 MP Filtri standard		
Pxx Customized		

Certifications	VEA21A	VEA21V	VEB	VL	VV
Without	•	•	•	•	•
EX ATEX certification	•	•	•	-	-
UL UL certification	•	-	-	-	-

SFSC series

Flow rate up to 700 l/min



Description

Technical data

Suction filters

Flow rate up to 700 l/min

SFSC is a range of suction filters with integrated shut-off valve for protection of the downstream pump against the coarse contamination.

They are placed below the minimum oil level, directly connected to the suction line of the pump.

They can be fitted on the side or below the tank, allowing a more flexible design of the tank.

The shut-off valve closes automatically when the cover is removed, allowing the filter element replacement without the fluid drop.

Available features:

- Flanged connections up to 4", for a maximum flow rate of 700 l/min
- Optional hose fitting installed, to connect the suction line without the use of flanges
- Magnetic filter, to hold the ferrous particles
- Plastic and metal handle, to close the shut-off valve before the cover removal
- Electrical switch, to signal the closed shut-off valve
- Visual, electrical and electronic clogging indicators

Common application:

Industrial equipment

Filter housing materials

- Housing:
 - Anodized Aluminium
 - Steel (chemical heat treatment): only for SFSC 535 - 540
- Cover:
 - Anodized Aluminium
 - Steel (chemical heat treatment): only for SFSC 535 - 540
- Optional flange:
 - Anodized Aluminium

Elements

Fluid flow through the filter element from IN to OUT

Seals

- Standard NBR series A or W
- Optional FPM series V or Z

Temperature

From -25 °C to +110 °C

Note

SFSC filters mounting, see the drawings on page 66 and following

Weights [kg] and volumes [dm³]

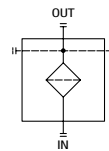
Filter series	Weights [kg]	Volumes [dm ³]
SFSC 500	4.2	1.8
SFSC 503	6.2	2.9
SFSC 504	7.2	4.0
SFSC 505	4.3	1.6
SFSC 510	5.4	2.1
SFSC 535	16	4.4
SFSC 540	18.6	6.5

Flow rates [l/min]

Filter series	Filter element design - N Series	
	M0025	M0060 M0090 M0250
SFSC 500	219	234
SFSC 503	325	390
SFSC 504	484	543
SFSC 505	199	221
SFSC 510	259	282
SFSC 535	439	479
SFSC 540	644	688

Maximum flow rate for a complete suction filter with a pressure drop $\Delta p = 0.08$ bar.
 The reference fluid has a kinematic viscosity of 30 mm²/s (cSt) and a density of 0.86 kg/dm³.

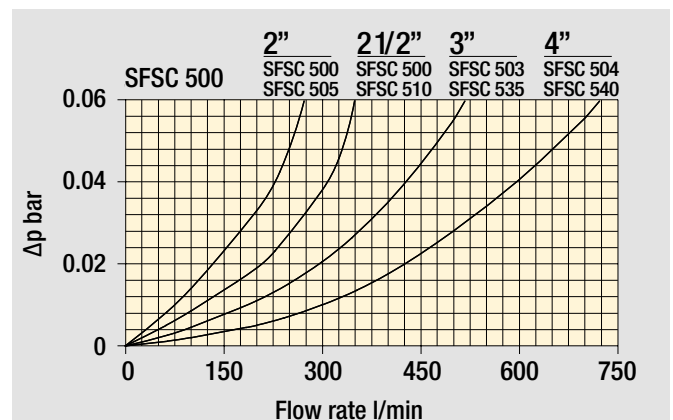
Hydraulic symbols



Filter series	
SFSC	•

PRESSURE DROP

Filter housings Δp pressure drop



The curves are plotted using mineral oil with density of 0.86 kg/dm³ in compliance with ISO 3968. Δp varies proportionally with density.

Corrective factors "Y" for filter element Δp calculation

Filter element		Nominal filtration Collapse $\Delta P : A = 1$ bar					
Type	Length	P0010	P0025	M0025	M0060	M0090	M0250
SSC 503	10	-	-	0.17	0.11	0.11	0.11
SSC 504	10	-	-	0.11	0.08	0.08	0.08
SSC 505	10	-	-	0.23	0.18	0.18	0.18
SSC 510	10	-	-	0.18	0.14	0.14	0.14
SSC 535	10	-	-	0.08	0.05	0.05	0.05
SSC 540	10	-	-	0.05	0.04	0.04	0.04

See page 22 for the complete information regarding filter element Δp calculation.

Maximum total pressure drop (Δp max) allowed by a new and clean filter

Filter family	Δp max	
Suction	0.08 bar	1.15 psi

Designation & Ordering code

COMPLETE FILTER

Series	Example 1:	SFSC	500	10	M0025	A	W	00	FE200	0	6T	MA	P01	NN
SFSC	Example 2:	SFSC	535	10	M0060	A	V	00	HB089	0	9T	MC	P01	NN

Size
500 | 503 | 504 | 505 | 510 | 535 | 540

Length
10

Filtration rating (filter media)
M0025 Wire mesh 25 µm **M0090** Wire mesh 90 µm
M0060 Wire mesh 60 µm **M0250** Wire mesh 250 µm

Element Δp
A 1 bar

Seals and treatments
A NBR
V FPM
W NBR with components surface treatment
Z FPM with components surface treatment

Bypass
00 Without bypass

Connections		500	505	510	503-535	504-540	500	505	510	503-535	504-540
FE200 2" SAE 3000 psi/M		•	•	-	-	-	•	•	-	-	-
FE212 2 1/2" SAE 3000 psi/M		•	-	•	-	-	•	-	-	-	-
FE300 3" SAE 3000 psi/M		-	-	-	•	-	-	-	•	-	-
FE400 4" SAE 3000 psi/M		-	-	-	-	•	-	-	-	-	•
FF200 2" SAE 3000 psi/UNC		•	•	-	-	-	-	-	-	-	-
FF212 2 1/2" SAE 3000 psi/UNC		•	-	•	-	-	-	-	-	-	-
FF300 3" SAE 3000 psi/UNC		-	-	-	•	-	-	-	-	-	-
FF400 4" SAE 3000 psi/UNC		-	-	-	-	•	-	-	-	-	•
HB063 Hose barb Ø 63 mm		•	•	-	-	-	•	•	-	-	-
HB075 Hose barb Ø 75 mm		•	-	•	-	-	•	-	-	-	-
HB089 Hose barb Ø 89 mm		-	-	-	•	-	-	-	•	-	-
HB114 Hose barb Ø 114 mm		-	-	-	-	•	-	-	-	-	•

Additional connections
0 Without additional connections

Connections for clogging indicators	500-503-504-540	505-510-535
6T With both side indicator connections, with metal plugs	•	-
9T With multiple indicator connections, with metal plugs	-	•

Additional features	500-503-504	505-510-535-540
MA With magnetic filter	•	•
MB With magnetic filter + polyamide handwheel	•	-
MC With magnetic filter + microswitch	-	•
MD With magnetic filter + microswitch + polyamide handwheel	•	-
ME With magnetic filter + microswitch + steel handwheel	•	-

Version
P01 Standard catalogue item

Certificates
NN None

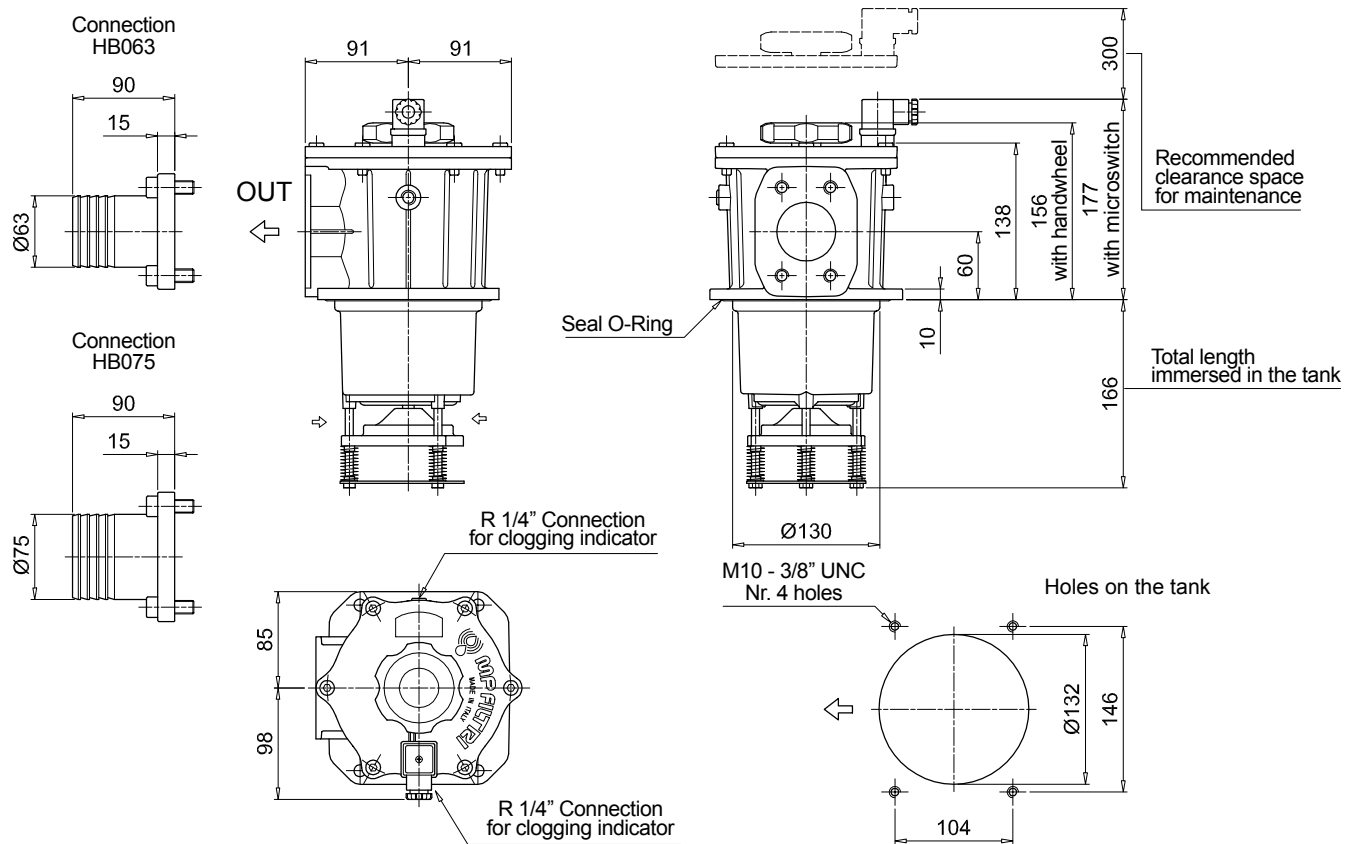
CLOGGING INDICATORS

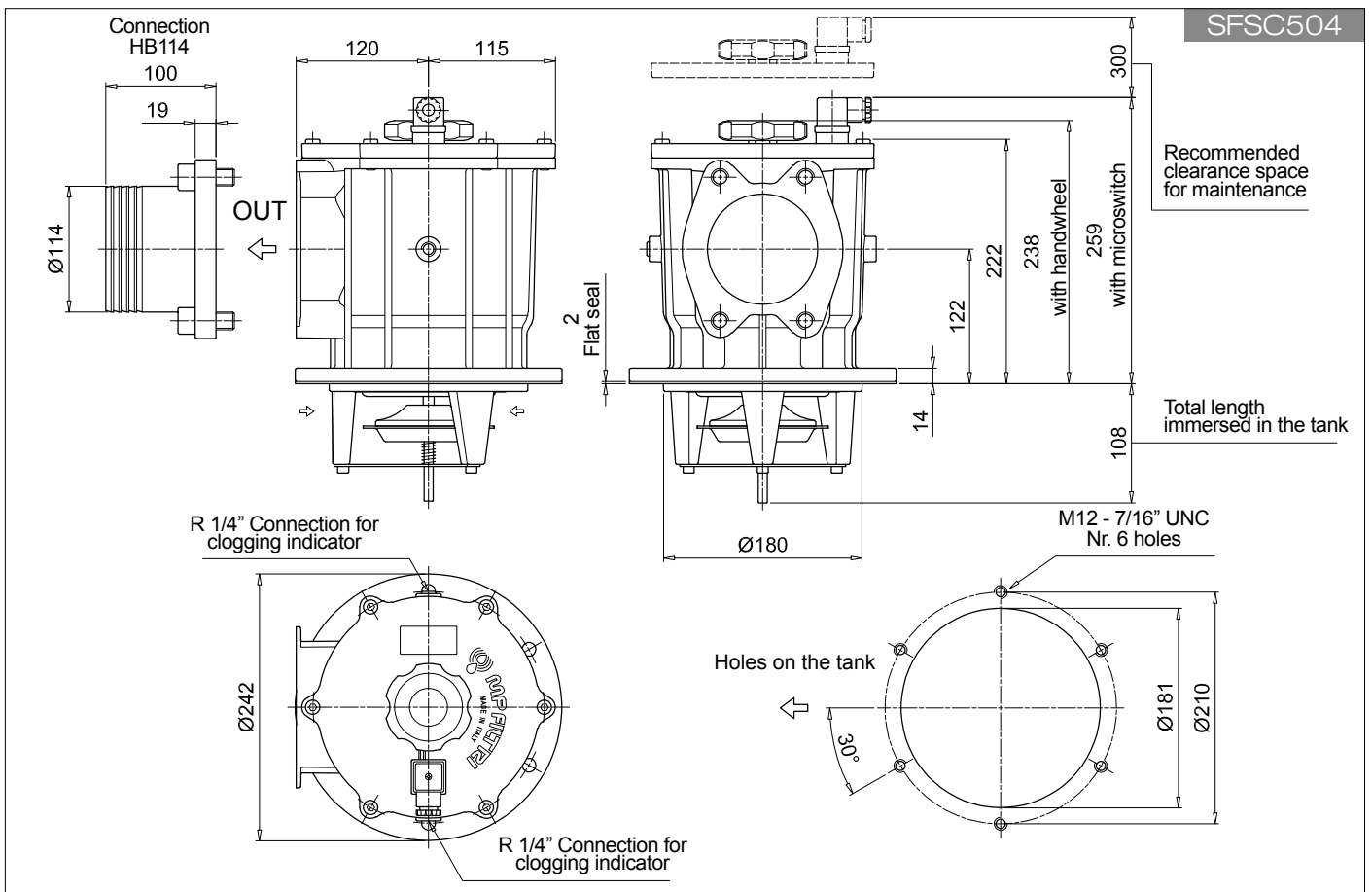
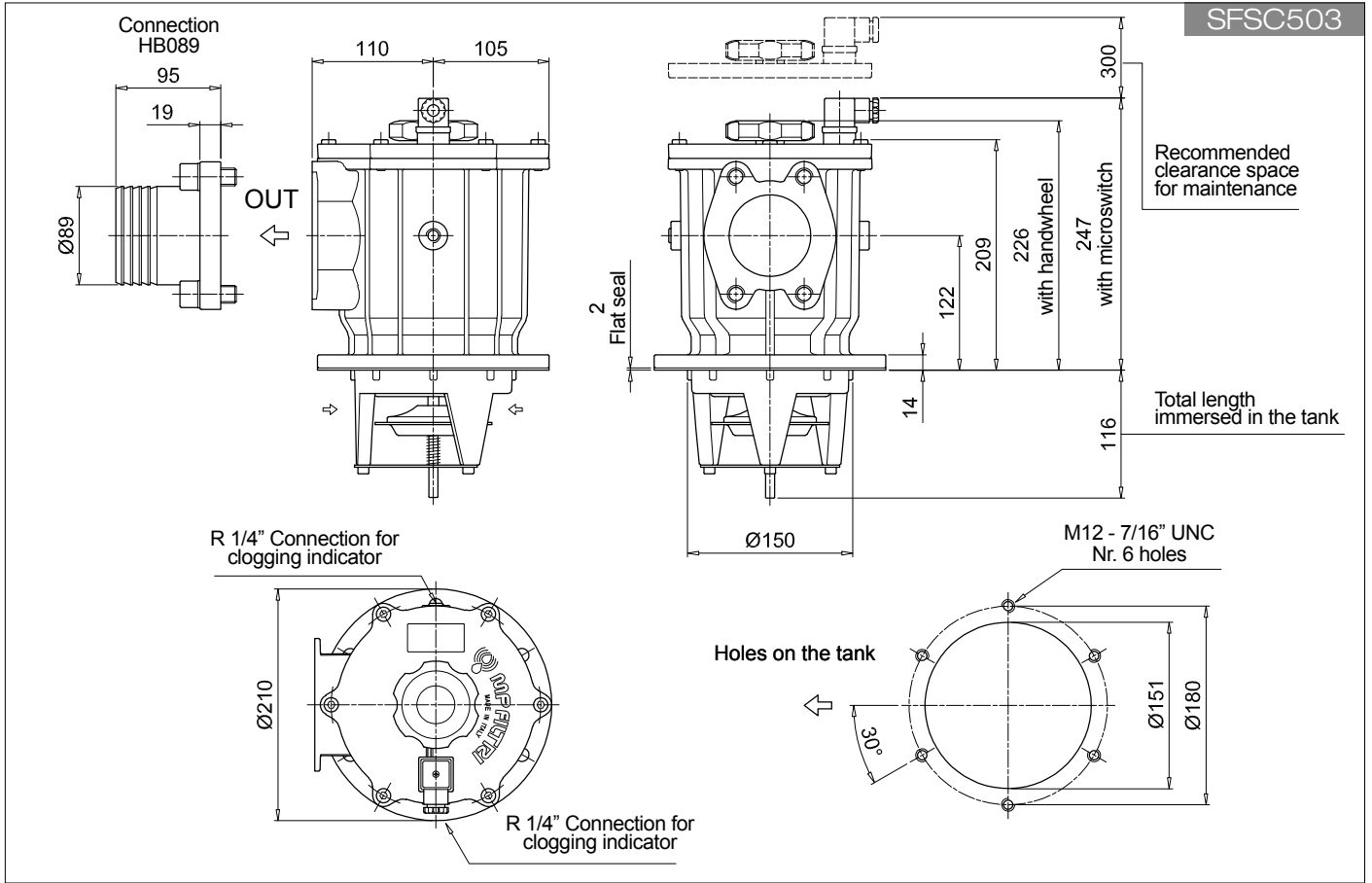
See page 719

VEA Electrical vacuum indicator	VVA Axial vacuum gauge
VLA Electrical / visual vacuum indicator	VVR Radial vacuum gauge

FILTER ELEMENT

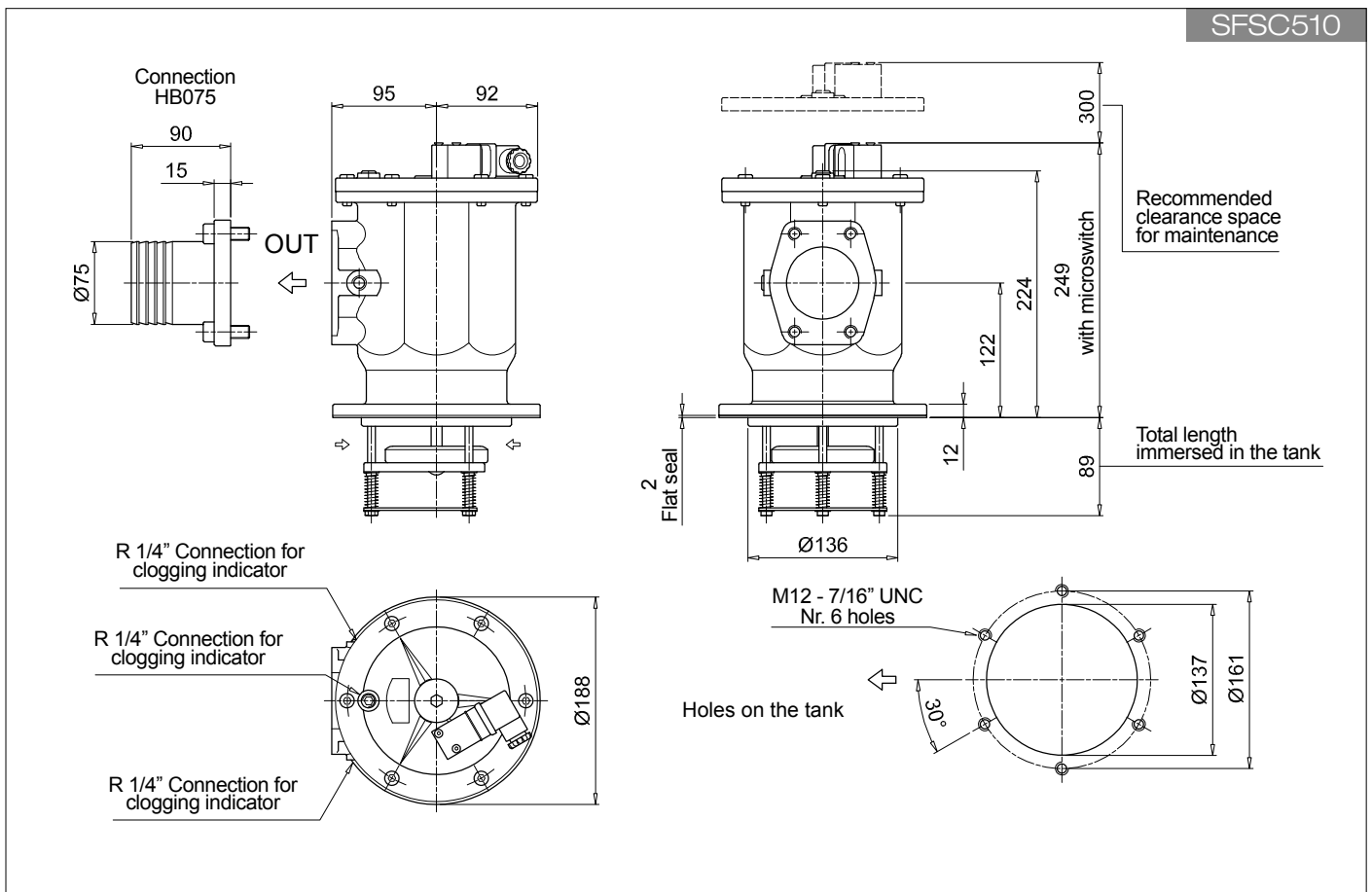
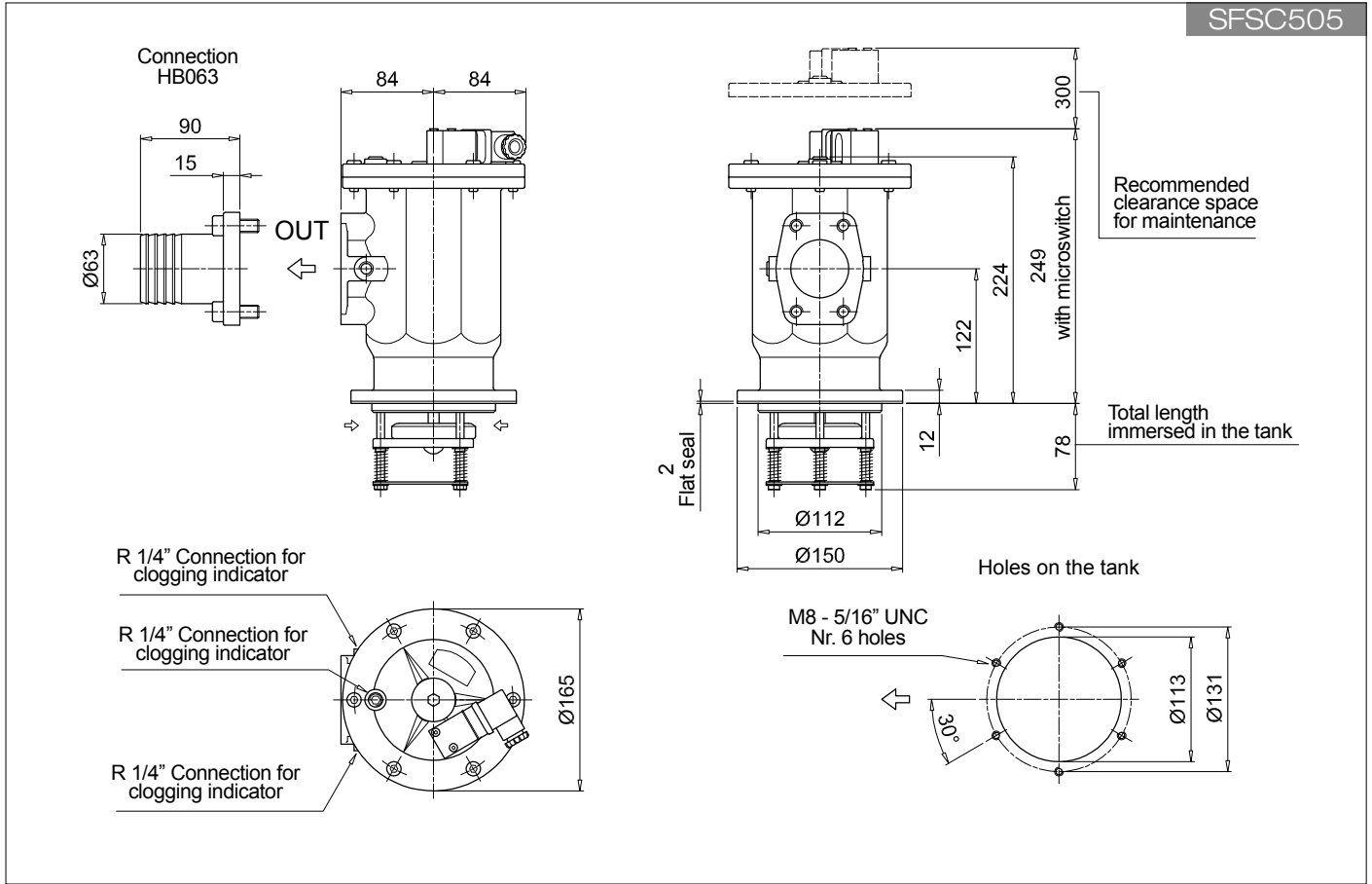
Series	Example 1: SSC 510 10 M0025 A N 00 NN P01 NN										
SSC	Example 2: SSC 535 10 M0060 A N 00 NN P01 NN										
Size											
503 SFSC 503	510 SFSC 500	540 SFSC 540									
504 SFSC 504	SFSC 510										
505 SFSC 505	535 SFSC 535										
Length											
10											
Filtration rating (filter media)											
M0025 Wire mesh 25 µm	M0090 Wire mesh 90 µm										
M0060 Wire mesh 60 µm	M0250 Wire mesh 250 µm										
Element Δp											
A 1 bar											
Seals and treatments											
N No seal											
Bypass											
00 Without bypass											
Additional features											
NN Without											
Version											
P01 Standard catalogue item											
Certificates											
NN None											

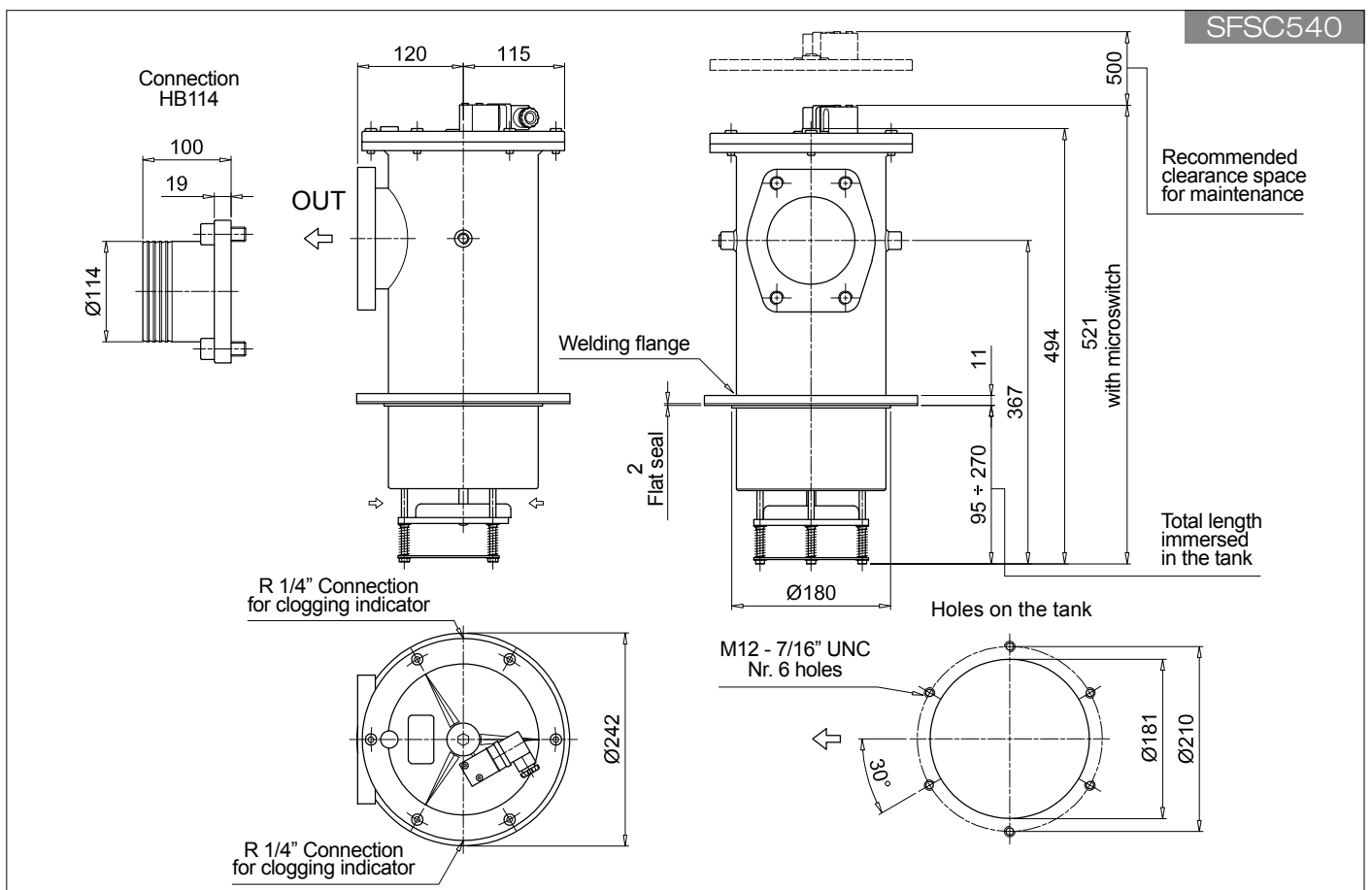
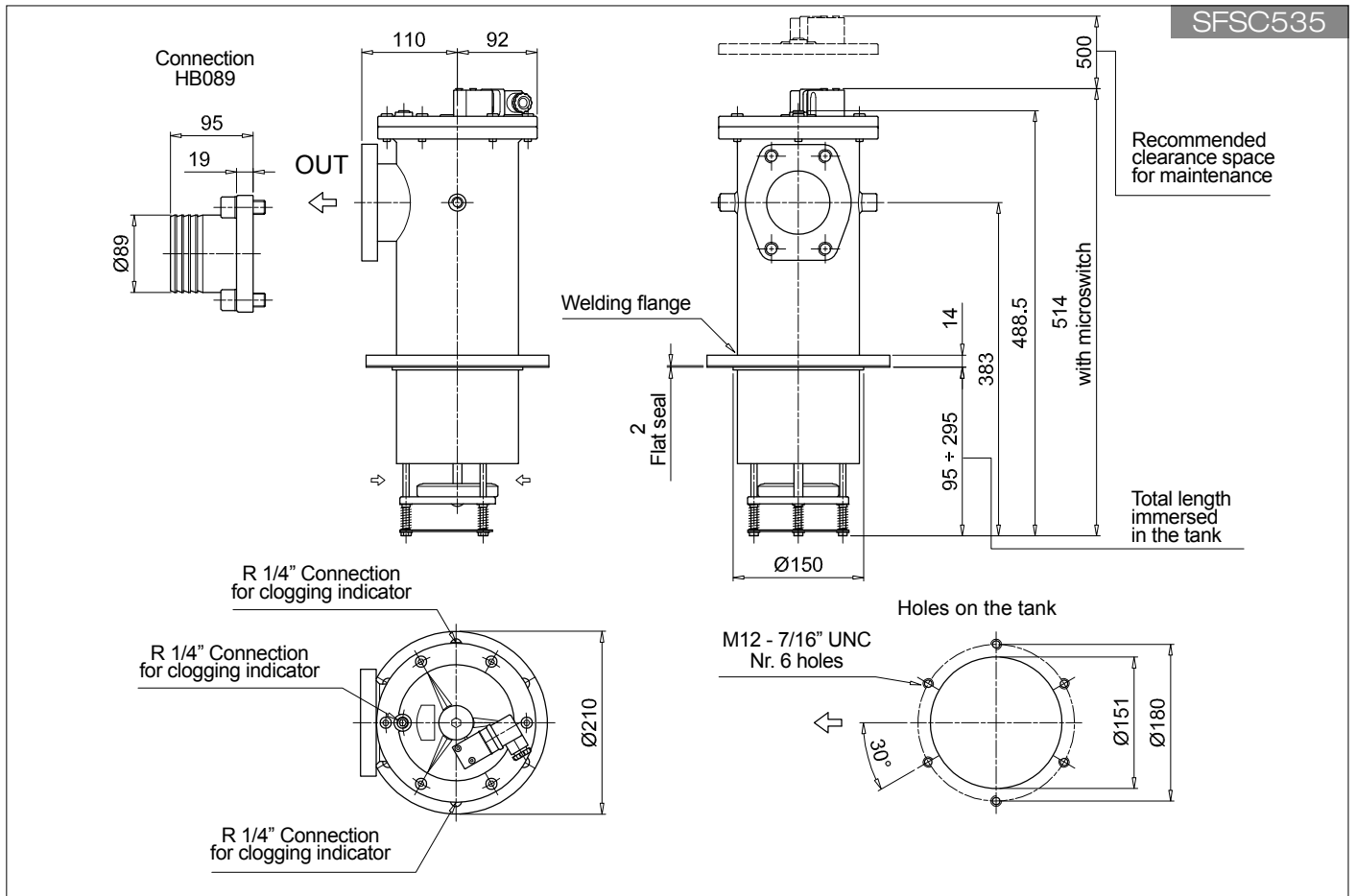




SFSC SFSC505 - SFSC510

Dimensions

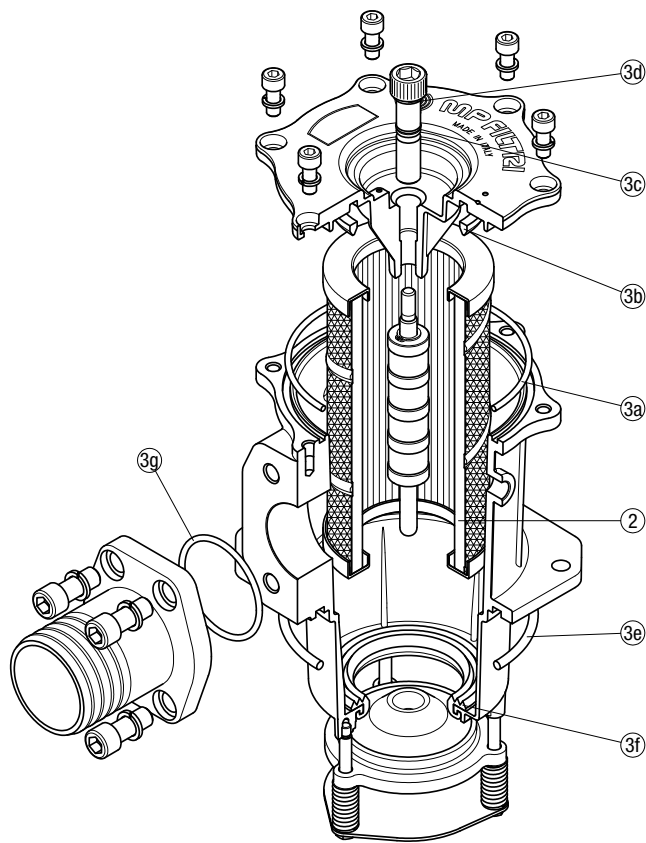




SFSC SPARE PARTS

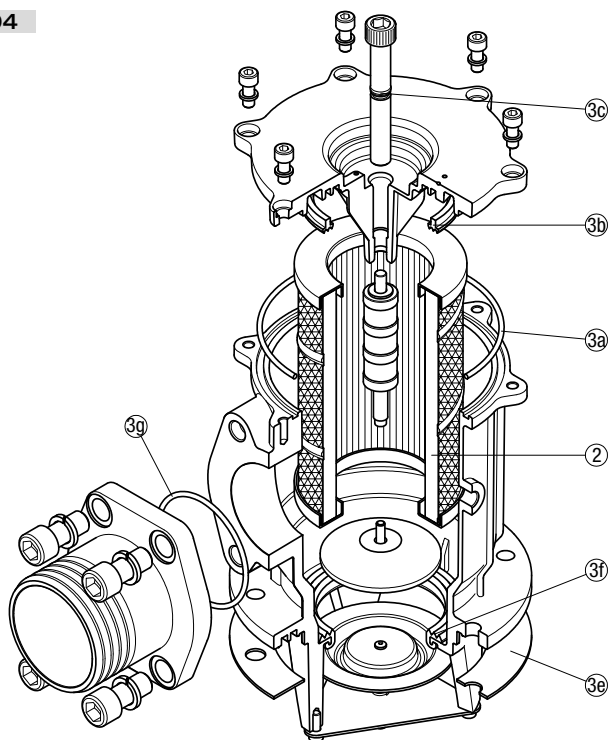
Order number for spare parts

SFSC 500



SFSC 503

SFSC 504



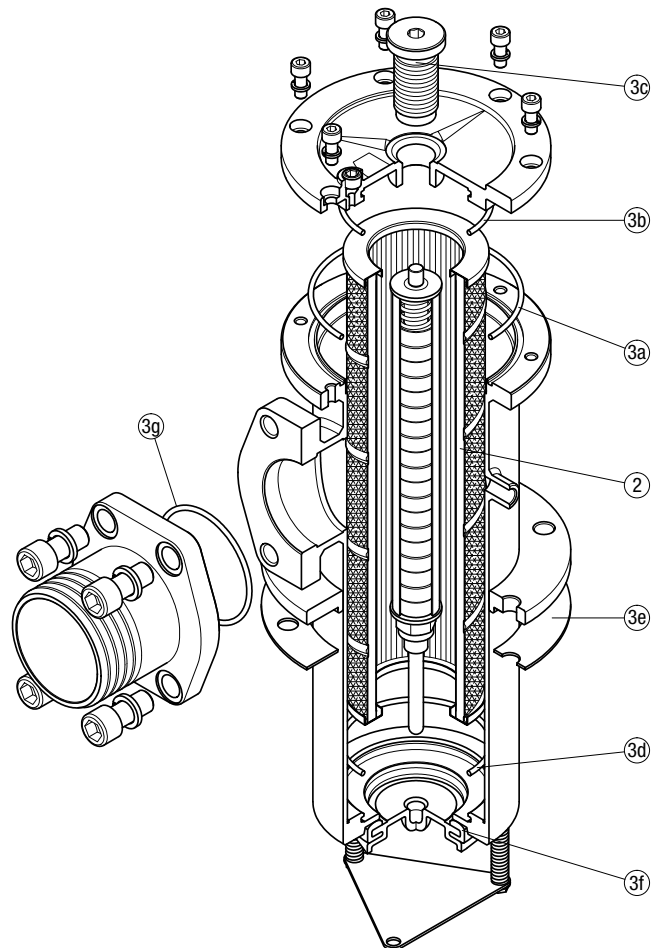
Item:	Q.ty: 1 pc.	Q.ty: 1 pc.	
Filter series	Filter element	Seal Kit code number NBR	Seal Kit code number FPM
SF2 500	See order table	02050141	02050142
SF2 503		02050070	02050071
SF2 504		02050072	02050073

SFSC 505

SFSC 510

SFSC 535

SFSC 540



Item:	Q.ty: 1 pc.	Q.ty: 1 pc.	
Filter series	Filter element	Seal Kit code number	
		NBR	FPM
SFSC 505	See order table	02050043	02050044
SFSC 510		02050045	02050046
SFSC 535		02050051	02050052
SFSC 540		02050053	02050054

Designation & Ordering code

VACUUM INDICATORS

Series	Configuration example 1:	VE	A	21	V	A	50	P01	EX
VE Electrical vacuum indicator	Configuration example 2:	VL	B	21	A	A	71	P01	
VL Electrical/Visual vacuum indicator	Configuration example 3:	VV	R	20				P01	
VV Vacuum gauge									

Type VE - VL	Type VV	SFxC	SFEX
A Connection EN 10226 - R1/4"	A Axial connection EN 10226 - R1/4"	•	-
B Connection EN 10226 - R1/8"	B Axial connection EN 10226 - R1/8"	-	•
	R Radial connection EN 10226 - R1/4"	•	-
	S Radial connection EN 10226 - R1/8"	-	•

Vacuum setting	VE	VL	VV
20 -0.16 bar	-	-	•
21 -0.21 bar	•	•	-

Seals	VEA - VLA	VEB - VLB
A NBR	•	•
V FPM	•	-

Thermostat	VE	VL
A Without	•	•

Electrical connections	VE	VL
50 Connection EN 175301-803	•	-
51 Connection EN 175301-803, transparent base with lamps 24 Vdc	-	•
52 Connection EN 175301-803, transparent base with lamps 110 Vdc	-	•
53 Connection EN 175301-803, transparent base with lamps 230 Vac	-	•
71 Connection IEC 61076-2-101 D (M12), black base with lamps 24 Vdc	-	•

Option	P01	Pxx
P01 MP Filtri standard		
Pxx Customized		

Certifications	VEA21A	VEA21V	VEB	VL	VV
Without	•	•	•	•	•
EX ATEX certification	•	•	•	-	-
UL UL certification	•	-	-	-	-

По вопросам продаж и поддержки обращайтесь:

Алматы (727)345-47-04
Ангарск (3955)60-70-56
Архангельск (8182)63-90-72
Астрахань (8512)99-46-04
Барнаул (3852)73-04-60
Белгород (4722)40-23-64
Благовещенск (4162)22-76-07
Брянск (4832)59-03-52
Владивосток (423)249-28-31
Владикавказ (8672)28-90-48
Владимир (4922)49-43-18
Волгоград (844)278-03-48
Вологда (8172)26-41-59
Воронеж (473)204-51-73
Екатеринбург (343)384-55-89

Иваново (4932)77-34-06
Ижевск (3412)26-03-58
Иркутск (395)279-98-46
Казань (843)206-01-48
Калининград (4012)72-03-81
Калуга (4842)92-23-67
Кемерово (3842)65-04-62
Киров (8332)68-02-04
Коломна (4966)23-41-49
Кострома (4942)77-07-48
Краснодар (861)203-40-90
Красноярск (391)204-63-61
Курск (4712)77-13-04
Курган (3522)50-90-47
Липецк (4742)52-20-81

Магнитогорск (3519)55-03-13
Москва (495)268-04-70
Мурманск (8152)59-64-93
Набережные Челны (8552)20-53-41
Новокузнецк (3843)20-46-81
Ноябрьск (3496)41-32-12
Новосибирск (383)227-86-73
Омск (3812)21-46-40
Орел (4862)44-53-42
Оренбург (3532)37-68-04
Пенза (8412)22-31-16
Петрозаводск (8142)55-98-37
Псков (8112)59-10-37
Пермь (342)205-81-47

Ростов-на-Дону (863)308-18-15
Рязань (4912)46-61-64
Самара (846)206-03-16
Санкт-Петербург (812)309-46-40
Саратов (845)249-38-78
Севастополь (8692)22-31-93
Саранск (8342)22-96-24
Симферополь (3652)67-13-56
Смоленск (4812)29-41-54
Сочи (862)225-72-31
Ставрополь (8652)20-65-13
Сургут (3462)77-98-35
Сыктывкар (8212)25-95-17
Тамбов (4752)50-40-97
Тверь (4822)63-31-35

Тольятти (8482)63-91-07
Томск (3822)98-41-53
Тула (4872)33-79-87
Тюмень (3452)66-21-18
Ульяновск (8422)24-23-59
Улан-Удэ (3012)59-97-51
Уфа (347)229-48-12
Хабаровск (4212)92-98-04
Чебоксары (8352)28-53-07
Челябинск (351)202-03-61
Череповец (8202)49-02-64
Чита (3022)38-34-83
Якутск (4112)23-90-97
Ярославль (4852)69-52-93

Россия +7(495)268-04-70

Казахстан +(727)345-47-04

Беларусь +(375)257-127-884

Узбекистан +998(71)205-18-59

Киргизия +996(312)96-26-47

эл.почта: mqt@nt-rt.ru || сайт: <https://mpfiltri.nt-rt.ru/>